



Introducing the *Sentry-go Enterprise Option*

Last Updated Monday, 24 October 2011

© 3Ds (UK) Limited
<http://www.Sentry-go.com>

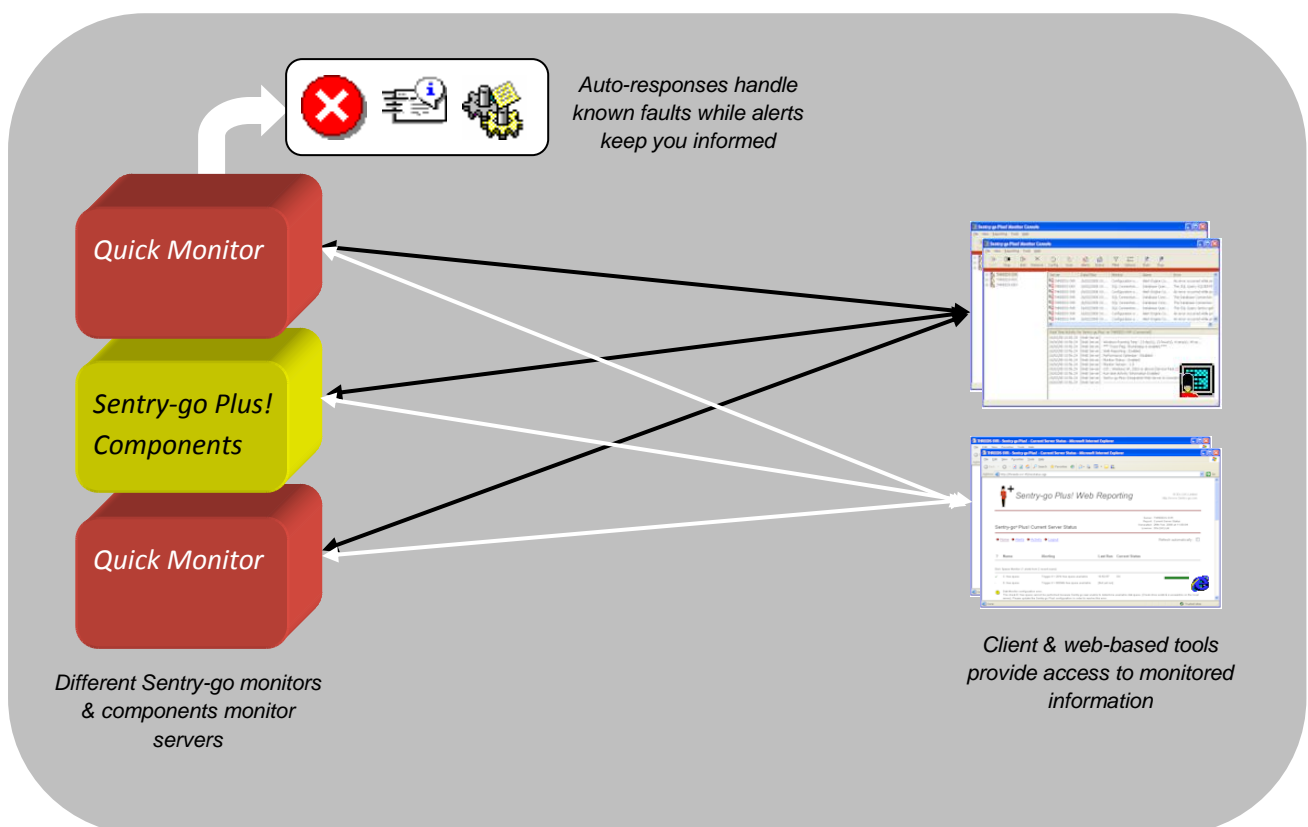
Be Proactive, Not Reactive!

Introduction

By default Sentry-go monitors run locally on their own respective server, monitoring either local resources or using the network to perform external checks & sending alerts etc. Management functions are provided centrally through the Client Console, an application that allows both remote administration as well as the synchronising of settings between individual monitors. Where enabled, Client Consoles can also connect directly to a monitor using the fully integrated web interface to access reports & perform other monitor-related tasks.

Although these monitors run individually, there may be times - especially in larger environments, where you wish to view monitored or monitoring information more centrally. In other words, take a more “enterprise-wide” view instead of a server view.

From Sentry-go v6.0 and above, you can do this quickly & easily using the Sentry-go Enterprise Option.



Sentry-go monitoring across the network

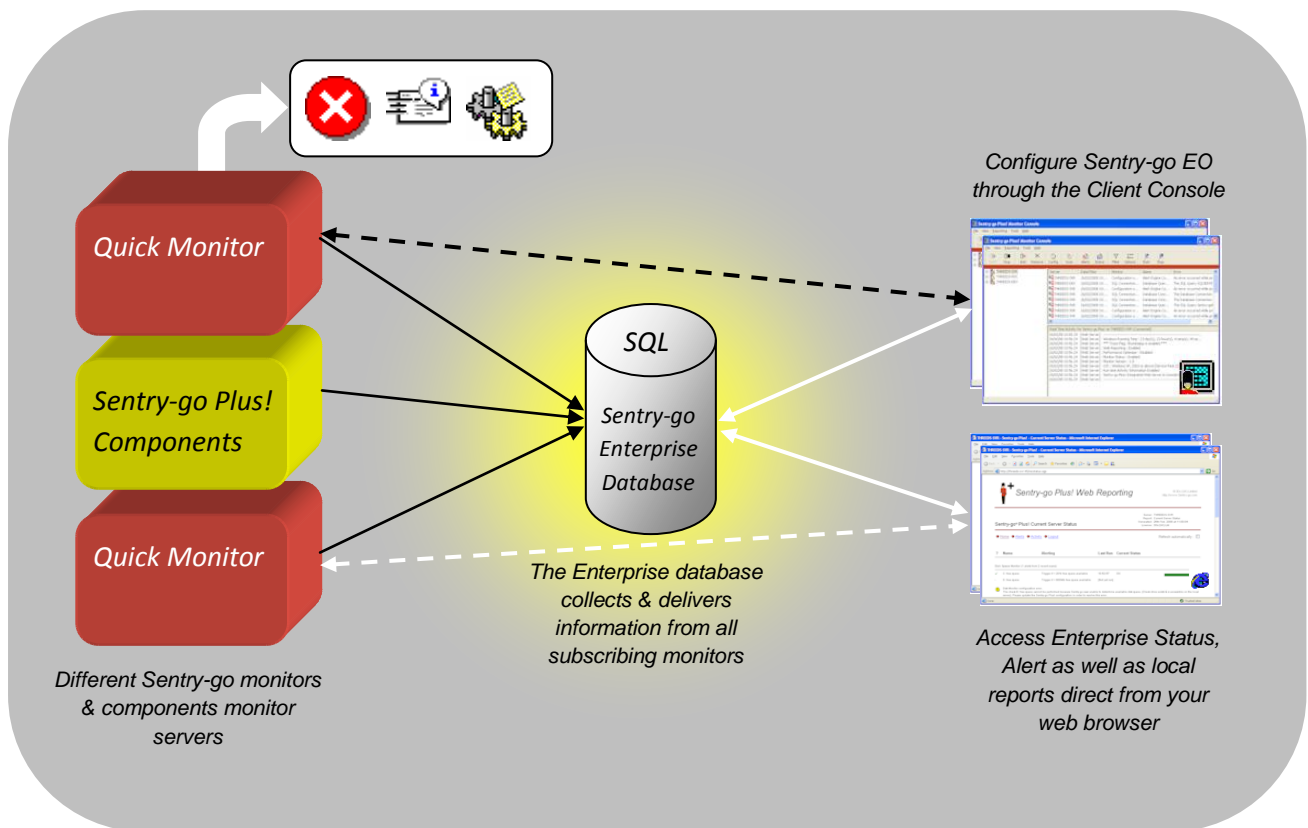
Sentry-go Enterprise Option

The “Enterprise Option” is a self-contained system which uses a central SQL Server database to collect & collate monitored information from around the Sentry-go environment. As the name suggests, it’s an optional component that can be used in conjunction with the Sentry-go Monitoring System and requires no additional hardware or software above the database itself.

Put simply, each Sentry-go Server subscribes to the Enterprise Option by way of a licence key. Once activated, it feeds information to the system in order to ...

- Indicate its current status
- Indicate an alert has been triggered
- Indicate the current value of a monitored check.

Monitors continue to work as before and can be accessed in the normal way. However, with the Sentry-go Enterprise Option, monitoring information can additionally be accessed in a more global, enterprise way.



Sentry-go Enterprise Option

Depending on the details being stored, information is either updated or stored for a configured amount of time, giving customers instant access via Enterprise-based web reports. In particular the following information can be displayed directly using the Enterprise Option ...

- **System Summary.**

This report shows graphically the current status (heartbeat) & health of all Sentry-go monitored servers. The latest alerts from each server can also be listed from here ...

The screenshot shows a web browser window with the URL `walton-fuji:1000/SgoMntrEntSummary.sgp?`. The page title is "Enterprise Monitoring Summary" and it is powered by Sentry-go. The last update was on 16th Sept. 2011 at 12:57:38. There are navigation links for "Show Current Status", "Show Alerts", "Show Statistics", "Show Config. Errors", "Help", and "Logout". There are also "Refresh" and "Clear" buttons. The main content area displays three server status cards:

Server Name	Response	Health
DevServer	Responding: OK (12:57:52)	Health: 90% (improving)
LiveServer	Responding: OK (12:57:52)	Health: 80% (improving)
WALTON-FUJI	Responding: OK (12:57:28)	Health: 75%

Each card has links for "Reports", "Alerts", and "Status". The footer contains the Sentry-go logo, the text "Sentry-go®. © 20s (UK) Limited, 1999-2011", and the URL `http://www.sentry-go.com`.

- **Alerts.**

This report shows the latest alerts from all monitored servers, in chronological order. Information can be further filtered on server, monitoring component etc. which helps to see if issues are isolated to single machines or a more global problem.

- **Current Status.**

The Current Status report shows the last known status of all checks being performed by monitored servers. This can be grouped either by server or monitoring component etc.

Enterprise Monitoring Status
 Powered by Sentry-go®
 Last updated: 16th Sept. 2011 at 12:58:11

Show ... Status of this server :
 Status of this component :
 Errors only :
 Sequence by :
 Auto-refresh :
 Refresh Clear

• [Show Summary](#) • [Show Alerts](#) • [Show Statistics](#) • [Show Config. Errors](#) • [Help](#) • [Logout](#)

Total active servers : 2 Total checks : 22 Total Check Errors : 2

Server	Monitoring Component	Check	Last Checked	Alerting	Current Status
LiveServer	Disk Space Monitor	C: free space	10:51:21	Trigger if < 20% free space available	OK, sufficient disk space is available (52% free)
LiveServer	Network Monitor [Network Access]	Monitor auto-scan servers	10:55:22	Trigger if any auto-scan servers PCs on the network cannot be accessed	OK, all devices are responding
LiveServer	Performance Monitor [Perf. History]	High CPU usage	10:55:24	Trigger if value > 80%	OK, current value is 10%
		Memory low	10:55:24	Trigger if value < 500000b	OK, current value is 214908928b
		% Paging File in use high	10:55:24	Trigger if value > 75%	OK, current value is 36%
		System Registry size near or at maximum	10:55:24	Trigger if value > 80%	OK, current value is 14%
		Suspicious no. Server Access attempts	10:55:24	Trigger if value > 0	OK, current value is 0
		Suspicious no. Server Logon attempts	10:55:24	Trigger if value > 0	OK, current value is 0

- **Configuration Error Summary.**

Any Sentry-go related configuration errors from around the entire environment are listed & displayed on this report.

- **Statistics.**

The Statistics report shows totals & statistical information from each monitored server. The overall state of the Enterprise database & housekeeping details are also shown here.


Enterprise Monitoring Statistics
 Powered by Sentry-go®
 Last updated: 16th Sept. 2011 at 12:55:23

[Show Summary](#)
[Show Current Status](#)
[Show Alerts](#)
[Show Config. Errors](#)
[Help](#)
[Logout](#)

Total servers : 3 **Oldest alert : 2011-09-16 10:56:26** **Last h/k run : Sep 16 2011 12:16PM**
Total alerts saved : 48 **Newest alert : 2011-09-16 12:51:54** **Last h/k run by : WALTON-FUJI**

----- Totals Since Monitor Last Restarted -----

Server	Version	Port	Started	Last Contact	Health	Scans Today	Total Scans	Alerts Today	Total Alerts	Response Today	Total Response
DevServer Alerts Status	6.0	1000	2011-09-16 10:51:19	2011-09-16 10:55:52	90% (up)	202	202	3	3	0	0
LiveServer Alerts Status	6.0	1000	2011-09-16 10:51:19	2011-09-16 10:55:52	80% (up)	202	202	3	3	0	0
WALTON-FUJI Alerts Status	6.0	1000	2011-09-16 12:16:17	2011-09-16 12:55:21	75%	635	635	8	8	0	0

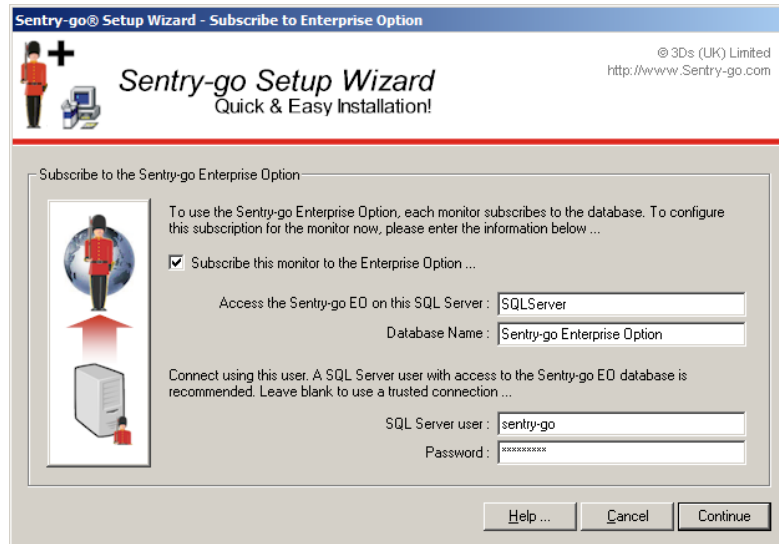

 Sentry-go®. © 3Ds (UK) Limited. 1999-2011
<http://www.sentry-go.com>

Accessing Web Reports

By connecting directly to any subscribing Sentry-go monitor, you have full access to the above reports. In addition, they can be published automatically to an external web server (such as IIS) in order to access the information from other locations – e.g. outside a firewall etc.

Installing the Enterprise Option

The Sentry-go Enterprise Option itself needs only to be installed once. When run, the Setup Wizard will request user/password details for your chosen SQL Server and connect to it. Once connected, the Enterprise Option database will be created.



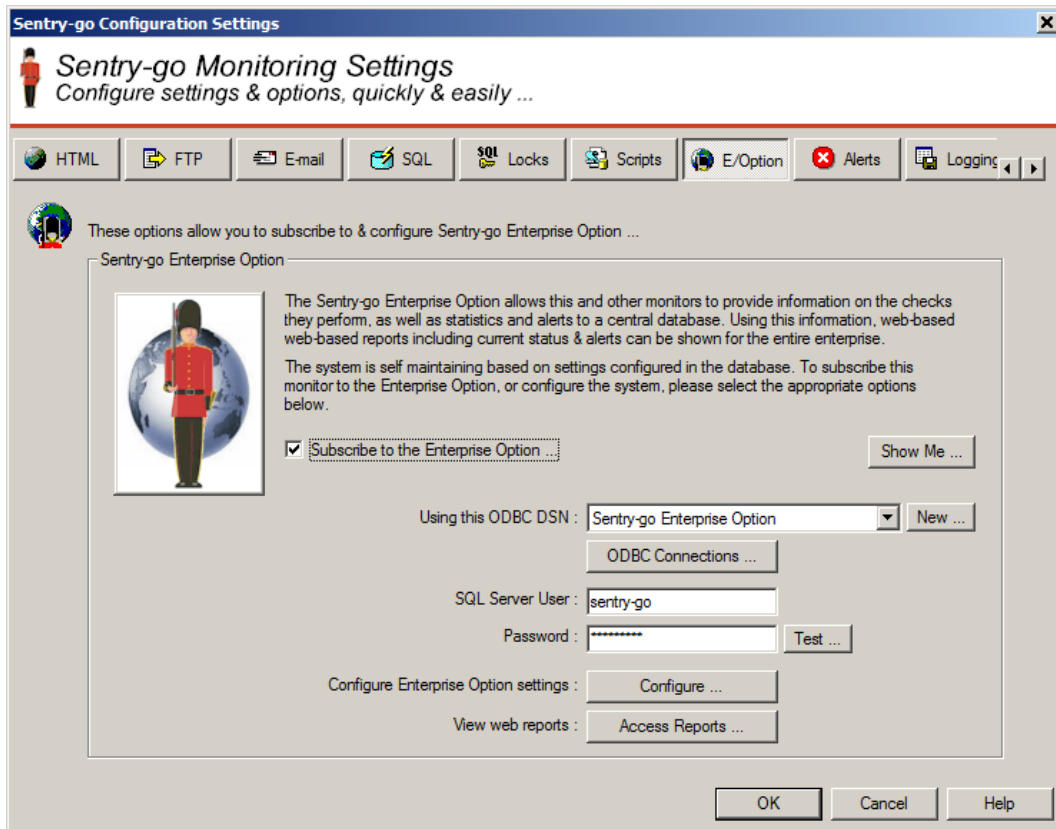
The screenshot shows the 'Sentry-go Setup Wizard - Subscribe to Enterprise Option' dialog box. The title bar includes the text 'Sentry-go Setup Wizard' and 'Quick & Easy Installation!'. The main content area is titled 'Subscribe to the Sentry-go Enterprise Option' and contains the following text: 'To use the Sentry-go Enterprise Option, each monitor subscribes to the database. To configure this subscription for the monitor now, please enter the information below ...'. Below this text is a checkbox labeled 'Subscribe this monitor to the Enterprise Option ...' which is checked. To the right of the checkbox are four input fields: 'Access the Sentry-go EO on this SQL Server : SQLServer', 'Database Name : Sentry-go Enterprise Option', 'SQL Server user : sentry-go', and 'Password : *****'. Below the input fields is a note: 'Connect using this user. A SQL Server user with access to the Sentry-go EO database is recommended. Leave blank to use a trusted connection ...'. At the bottom of the dialog are three buttons: 'Help ...', 'Cancel', and 'Continue'.

Having installed the database, it will contain default settings configured by the Wizard. These can then be viewed or edited through the Sentry-go Client Console or Easy Access Utility by configuring any monitor that has the Enterprise option installed.

 For more information, see [Sentry-go - Installing Sentry-go Enterprise](#).

Configuration & Maintenance

To connect to the Sentry-go Enterprise database, the monitoring service simply needs to be configured to connect to the appropriate SQL Server. You do this through the Client Console in the normal way, by selecting the Enterprise Option tab. Once enabled, the monitor automatically subscribes to EO, meaning that it connects to and feeds the database with status & monitoring information as it's captured.



If configured, any subscribing monitor can also access Enterprise-based web reporting, either by accessing it through the Client Console or using the appropriate URL from a web browser such as Microsoft Internet Explorer, Mozilla Firefox or Google Chrome.

The EO system is self-maintaining, based on the configurable options held in the database and updatable through the Client Console. Each subscribing monitor can perform housekeeping on the database, removing old data based on these configured values.

Benefits

The Sentry-go Enterprise Option gives users the ability to see & treat all monitors as a whole. With it, you can view aspects of the entire enterprise, rather than on a server by server basis that is normally available. This is of particular benefit to larger organisations where multiple Sentry-go monitors are installed.

Web-based reports allow you to ...

- View information from all monitors within a single report, including alerts, the current status of monitored checks and overall system health.
- Drill down to view all aspects of a particular server.
- Drill down to view all aspects of a particular monitoring component across servers.
- Spot & analyse trends and common issues between servers.
- Access monitored information directly from the server in order to target a specific issue.

FAQs

Q. Which servers support the Sentry-go EO ?

A. You will need Sentry-go Monitoring System v5.6 or above to use EO. Customers already using v5.x can upgrade for free direct from the web site – <http://www.Sentry-go.com/software-downloads.aspx>.

Q. What software do I need to use Sentry-go EO ?

A. Sentry-go EO uses a central SQL Server database which each monitor must connect to. Monitor's access the database using ODBC. Apart from this, no additional software, other than Sentry-go monitoring software itself is required.

Q. How do I configure Sentry-go EO ?

A. As with all monitoring checks & settings, you can access EO settings through the Sentry-go Client Console. By including the appropriate licence, an "E/Option" tab will be added to the configuration window. Settings are stored centrally within the database; only connectivity settings are monitor-dependent.

Q. Does Sentry-go EO replace my current monitor's reporting ?

A. No, Sentry-go EO is an optional addition to our standard monitoring solutions. You can continue to use server-level reporting direct from the monitor.

Q. Can I access Enterprise information externally ?

A. Yes, you can publish Enterprise reports to an external web server such as IIS. This can then be accessed externally, from outside your firewall for example.

Q. Do I need to use Sentry-go EO ?

A. No, Sentry-go EO is an optional component. However, for larger installations with multiple monitors, it provides an ideal way of accessing monitoring information globally, rather than on a per-server basis.

Q. How do I purchase Sentry-go EO ?

A. Simply purchase the Sentry-go EO licence from the web site – <http://www.Sentry-go.com/buy-now.aspx> and add it through your Client Console to each Sentry-go monitor.

Evaluating Sentry-go

By far the best way to see Sentry-go and the Enterprise Option is to try it for yourself.

You are welcome to download any available Sentry-go solution free of charge for 21 days. Simply download the Setup Wizard & associated files from our web site – <http://www.Sentry-go.com/software-downloads.aspx>.

Purchasing & pricing

Pricing information for the entire Sentry-go monitoring solution, including the Enterprise Option - including bundle discount, latest offers, upgrades & site licences is available on-line.

Please visit <http://www.Sentry-go.com/pricing.aspx>.

You can purchase Sentry-go and/or the Enterprise Option ...

- On-line at <http://www.Sentry-go.com/buy-now.aspx>.
- Using a Purchase Order (e-mail Sales@Sentry-go.com)
- Through your software reseller.

More information, help & support

More information on the Sentry-go monitoring software range is available.

- For more information on a particular monitor type, please refer to the appropriate factsheet.
- For the very latest information & product updates, please visit <http://www.Sentry-go.com>
- For sales advice, please e-mail Sales@Sentry-go.com
- For technical support, please e-mail Support@Sentry-go.com